

RESOLUTION NO. 05-18

**RESOLUTION CREATING RURAL SPECIAL IMPROVEMENT
MAINTENANCE DISTRICT KNOWN AS R.S.I.D. #728M
LINLEE LAKE ESTATES SUBDIVISION, STREETS AND PARK**

WHEREAS, the Board of County Commissioners of Yellowstone County, Montana, met in regular session and executed a Resolution of Intent to Create a Rural Special Improvement Maintenance District #728M for Linlee Lake Estates Subdivision, described in Exhibit A as lots 1-9 block 1, lots 1-9 block 2, lots 1-20 block 3, lots 1-27 block 4, lots 1-20 block 5, and lots 1-7 block 6 of Linlee Lake Estates Subdivision and more particularly shown in Exhibit B (map) and,

WHEREAS, the Clerk and Recorder published the Notice of the passage of Resolution of Intent to Create the District in the Billings Gazette on February 18th, 2005 and February 25th, 2005, and mailed a copy of the Notice to every person, firm or corporation owning property in the District; and,

WHEREAS, the Board of County Commissioners finds, determines and declares:

1. That the public interest or convenience requires the creation of a Rural Special Improvement Maintenance District as hereinafter described;
2. That the costs of providing for the maintenance shall be borne by owners of the property included within the boundaries of the Rural Special Improvement Maintenance District with all existing and future lots being assessed an equal amount on a per lot basis;
3. That the purpose of forming the District is to provide for the maintenance, preservation, and repair of the streets and park located within the boundaries of this District;
4. That the Commissioners have been presented with a valid Petition to create the proposed District;

NOW, THEREFORE, BE IT RESOLVED by the Board of County Commissioners of Yellowstone County as follows:

1. The Commissioners have acquired jurisdiction to create a Rural Special Improvement Maintenance District No. 728M to provide for the annual maintenance, operation and preservation of the streets and park. The maintenance costs are more particularly described in Exhibit C. The estimated maintenance costs shown do not preclude other eligible street and park maintenance expenditures.

2. All of the costs of the District shall be assessed equally on a per lot basis for all existing and future lots (see Exhibit C). The boundaries of this District are shown on the map attached as Exhibit B and described in Exhibit A.

3. The number of the Rural Special Improvement Maintenance District thereof shall be No. 728M.

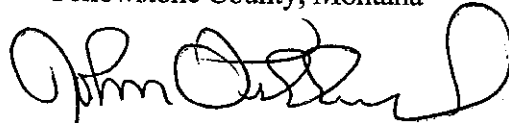
4. All lots accessing their property from the streets will benefit from proposed R.S.I.D. and shall be assessed for maintenance. All lots will be assessed an equal amount based upon the total cost of the maintenance.

5. The Commissioners desire that an Ad Hoc Committee be appointed to make recommendations to the Commissioners with regard to the need for assessments to be made for the maintenance and the amount of the assessments, and how the assessments should be spent. The Commissioners ask that the Petitioners submit a list of some individuals who are willing to serve on the Ad Hoc Committee.

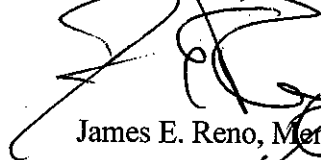
PASSED AND ADOPTED by the Board of County Commissioners of Yellowstone County, Montana, this 22nd day of March, 2005.

Board of County Commissioners
Yellowstone County, Montana

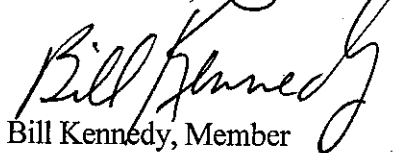
(SEAL)



John Ostlund, Chair

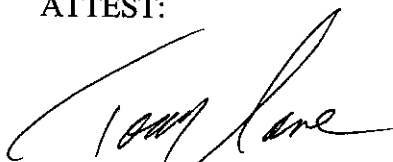


James E. Reno, Member



Bill Kennedy, Member

ATTEST:



Tony Nave

EXHIBIT A

PETITION TO ESTABLISH A RURAL SPECIAL IMPROVEMENT DISTRICT (RSID)

**SECTION B
LEGAL DESCRIPTIONS**

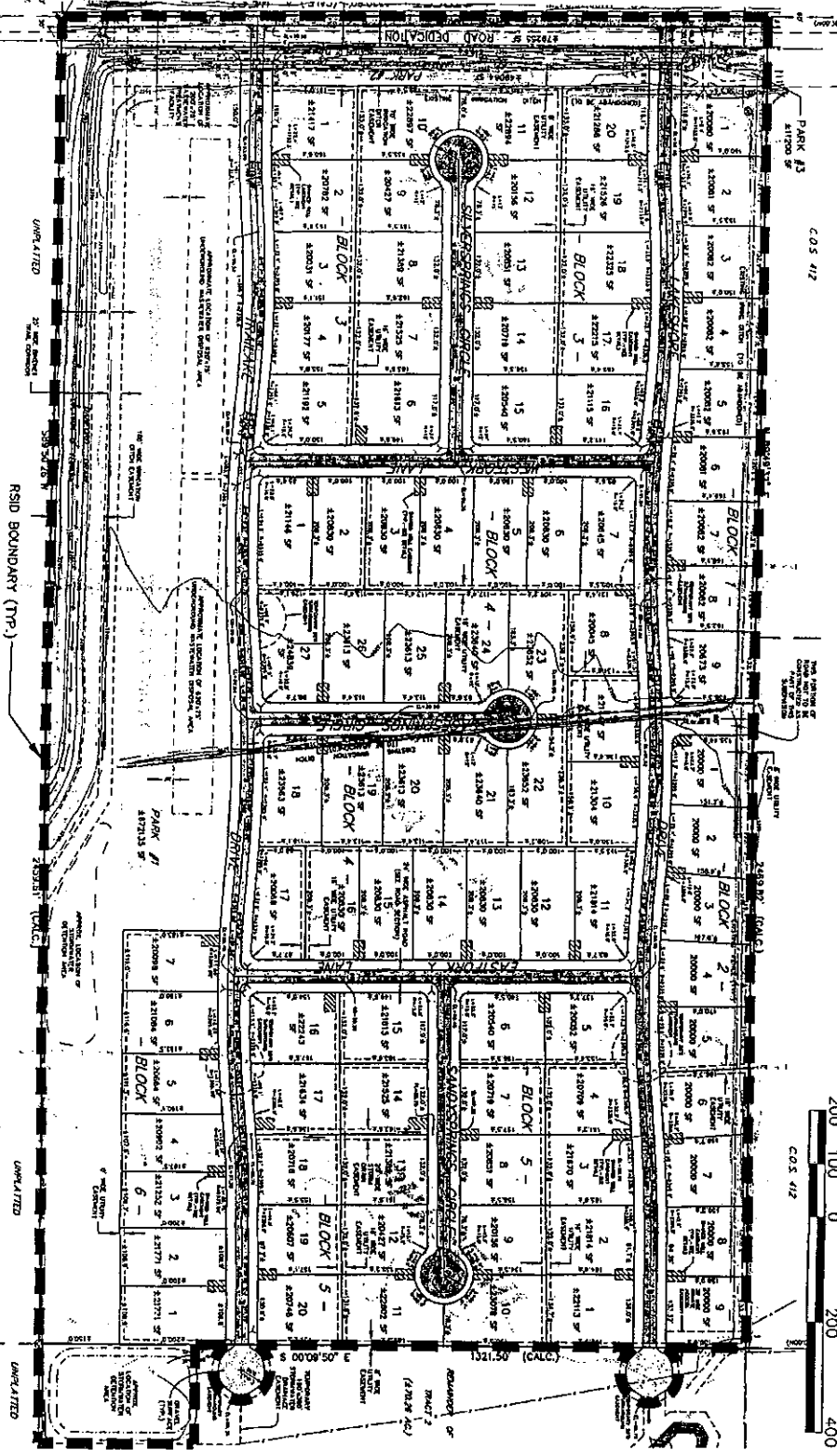
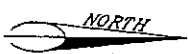
LINLEE LAKE ESTATES SUBDIVISION - BLOCK 1, LOTS 1 THROUGH 9
BLOCK 2, LOTS 1 THROUGH 9
BLOCK 3, LOTS 1 THROUGH 20
BLOCK 4, LOTS 1 THROUGH 27
BLOCK 5, LOTS 1 THROUGH 20
BLOCK 6, LOTS 1 THROUGH 7

PREPARED FOR : OWEN LEE MYERS & LINDA E. MYERS
 PREPARED BY : ENGINEERING, INC.
 SCALE : 1" = 200'

STREET/STORMWATER & PARK MAINTENANCE RSID BOUNDARY EXHIBIT OF
LINLEE LAKE ESTATES SUBDIVISION
 BEING A PORTION OF TRACT 2 OF CERTIFICATE OF SURVEY NO. 963
 SITUATED IN THE NW 1/4 OF SECTION 30, T. 1 S., R. 25 E., P.M.M.
 YELLOWSTONE COUNTY, MONTANA

EXHIBIT B

DECEMBER, 2004
 BILLINGS, MONTANA



DATE	12/10/04
BY	OWEN LEE MYERS & LINDA E. MYERS
PROJECT	RSID BOUNDARY EXHIBIT
SCALE	1" = 200'
DATE	12/10/04
BY	OWEN LEE MYERS & LINDA E. MYERS
PROJECT	RSID BOUNDARY EXHIBIT

LINLEE LAKE ESTATES SUBDIVISION
 BEING A PORTION OF TRACT 2 OF CERTIFICATE OF SURVEY NO. 963
 SITUATED IN THE NW 1/4 OF SECTION 30, T. 1 S., R. 25 E., P.M.M.
 YELLOWSTONE COUNTY, MONTANA

STREET/STORMWATER & PARK MAINTENANCE RSID BOUNDARY EXHIBIT



ENGINEERING, INC.
 Consulting Engineers and Land Surveyors

1248 South 27th Street West
 Billings, Montana 59102
 Phone (406) 253-5255
 www.enjinc.com

EXHIBIT C

PETITION TO ESTABLISH A RURAL SPECIAL IMPROVEMENT DISTRICT (RSID)

**SECTION C
ESTIMATED ANNUAL MAINTENANCE COST**

FALL MAINTENANCE:

ACTIVITY/IMPROVEMENT	ESTIMATED COST
STREETS - Snow Removal/Ice Control	\$ 800.00
PARKS - Mowing/Irrigation/Winterize Irrigation System	\$ 1,500.00

WINTER MAINTENANCE:

ACTIVITY/IMPROVEMENT	ESTIMATED COST
STREETS - Snow Removal/Ice Control	\$2,400.00
	\$

SPRING MAINTENANCE:

ACTIVITY/IMPROVEMENT	ESTIMATED COST
STREETS - Crack Sealing/Patching and miscellaneous maintenance	\$ 2,000.00
STREETS - Stormwater detention pond maintenance	\$ 2,500.00
STREETS - Weed Control	\$ 300.00
PARKS - Mowing/Irrigation/Irrigation System Startup/Weed Control	\$ 1,800.00

SUMMER MAINTENANCE:

ACTIVITY/IMPROVEMENT	ESTIMATED COST
STREETS - Weed Control	\$ 300.00
STREETS - Chip Seal (every 7 years)	\$ 10,000.00
PARKS - Mowing/Irrigation/Weed Control	\$ 1,700.00

TOTAL ESTIMATED ANNUAL MAINTENANCE COST: \$ 23,300.00

EXHIBIT D

PETITION TO ESTABLISH A RURAL SPECIAL IMPROVEMENT DISTRICT (RSID)

**SECTION D
METHOD OF ASSESSMENT**

CHOOSE A METHOD OF ASSESSMENT:

Equal Amount: Assessment spread equally between 92 lots

Front Footage: _____

Other (Describe): _____

Square Footage (Please list the square footage for each lot within the proposed district):

Property Owner	Lot & Block, Subdivision or C/S	Total Square Footage